

## PS8 ORIGINAL METAL PUMP

**51 mm (2") Pump**  
**Maximum Flow Rate:**  
**723 lpm (191 gpm)**



## PUMP DATA

**Specifications:**

Height: 668 mm (26.3")  
 Width: 404 mm (15.9")  
 Depth: 339 mm (13.3")  
 Est. Ship Weight: Aluminum 35 kg (78 lbs)  
 316 Stainless Steel 53 kg (117 lbs)  
 Cast Iron 49 kg (109 lbs)  
 Alloy C 54 kg (119 lbs)  
 Air Inlet: 19 mm (3/4")  
 Liquid Inlet: 51 mm (2")  
 Liquid Outlet: 51 mm (2")

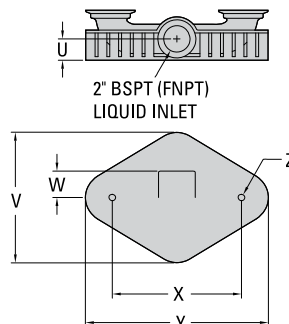
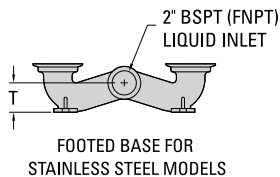
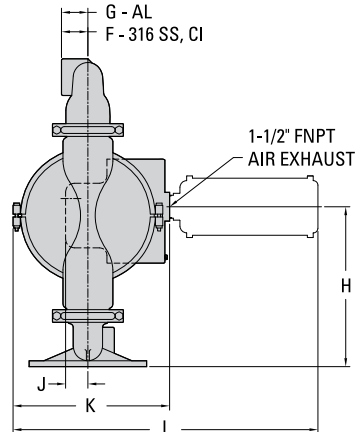
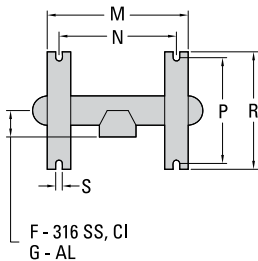
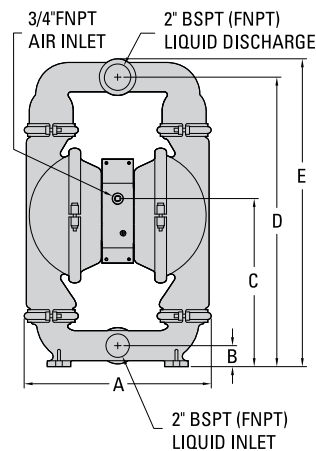
**Temperature Limits:**

Polypropylene	0°C to 79°C	32°F to 175°F
PVDF	-12°C to 107°C	10°F to 225°F
PFA	7°C to 107°C	20°F to 225°F
Neoprene	-18°C to 93°C	0°F to 200°F
Buna-N	-12°C to 82°C	10°F to 180°F
EPDM	-51°C to 138°C	-60°F to 280°F
Viton® FKM	-40°C to 177°C	-40°F to 350°F
Wil-Flex™	-40°C to 107°C	-40°F to 225°F
Saniflex™	-29°C to 104°C	-20°F to 220°F
Polyurethane	-12°C to 66°C	10°F to 150°F
Polytetrafluoroethylene (PTFE) <sup>1</sup>	4°C to 104°C	40°F to 220°F
Nylon	-18°C to 93°C	0°F to 200°F
Acetal	-29°C to 82°C	-20°F to 180°F
SIPD PTFE with Neoprene-backed	4°C to 104°C	40°F to 220°F
SIPD PTFE with EPDM-backed	-10°C to 137°C	14°F to 280°F
Polyethylene	0°C to 70°C	32°F to 158°F
Geolast®	-40°C to 82°C	-40°F to 180°F

<sup>1</sup> Full-Stroke PTFE 4°C to 104°C (40°F to 220°F)

## DIMENSIONAL DRAWING

Mouse-over letters to highlight dimensions



## DIMENSIONS

ITEM	METRIC (mm)	STANDARD (inch)
A	404	15.9
B	45	1.8
C	363	14.3
D	630	24.8
E	668	26.3
F	58	2.3
G	64	2.5
H	346	13.6
J	48	1.9
K	339	13.3
L	659	26.0
M	315	12.4
N	257	10.1
P	231	9.1
R	257	10.1
S	15	0.6
T	64	2.5
U	51	2.0
V	284	11.2
W	58	2.3
X	279	11.0
Y	396	15.6
Z	15 DIA.	0.6 DIA.

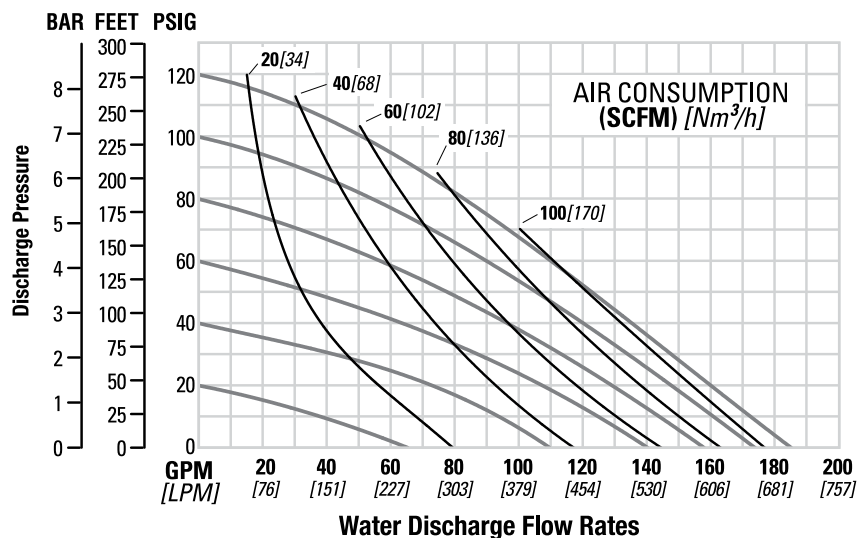
LW0022 REV. A

## PS8 ORIGINAL METAL PUMP

### PERFORMANCE

#### PS8 METAL RUBBER-FITTED

Max. Flow Rate ..... 700 lpm (185 gpm)  
Max. Inlet Pressure ..... 8.6 bar (125 psi)  
Max. Solids Passage ..... 6.4 mm (1/4")  
Max. Suction Lift ..... 7.2 m Dry (23.8')  
9.0 m Wet (29.5')



#### PS8 METAL EZ-INSTALL TPE-FITTED

Max. Flow Rate ..... 719 lpm (190 gpm)  
Max. Inlet Pressure ..... 8.6 bar (125 psi)  
Max. Solids Passage ..... 6.4 mm (1/4")  
Max. Suction Lift ..... 6.9 m Dry (22.7')  
9.0 m Wet (29.5')

