

**WILDEN®**  
Part of Pump Solutions Group  
A **DOVER** COMPANY

**EOM**  
Engineering  
Operation &  
Maintenance

**PX2**  
Saniflo™ Hygienic Series  
Metal Pumps



*Where Innovation Flows*

[www.wildenpump.com](http://www.wildenpump.com)

**PROFLO™ X**  
PROGRESSIVE PUMP TECHNOLOGY

**CERTIFIED**  
**ehedg**  
HYGIENIC ENGINEERING &  
DESIGN  
TYPE EL  
SEPTEMBER 2005

**A**  
**3**  
44-03

**CE**

WIL-12330-E-05  
TO REPLACE WIL-12330-E-04

## CAUTIONS—READ FIRST!



**CAUTION:** Do not apply compressed air to the exhaust port — pump will not function.



**CAUTION:** Do not over-lubricate air supply — excess lubrication will reduce pump performance. Pump is pre-lubed.



### TEMPERATURE LIMITS:

Neoprene	-17.7°C to 93.3°C	0°F to 200°F
Buna-N	-12.2°C to 82.2°C	10°F to 180°F
Nordel <sup>®</sup>	-51.1°C to 137.8°C	-60°F to 280°F
Viton <sup>®</sup>	-40°C to 176.7°C	-40°F to 350°F
Saniflex <sup>™</sup>	-28.9°C to 104.4°C	-20°F to 220°F
Polytetrafluoroethylene (PTFE)	4.4°C to 104.4°C	40°F to 220°F
Polyurethane	-12.2°C to 65.6°C	10°F to 150°F
Wil-Flex <sup>™</sup>	-40°C to 107.2°C	(-40°F to 225°F)

NOTE: Not all materials are available for all models. Refer to Section 2 for material options for your pump.



**CAUTION:** When choosing pump materials, be sure to check the temperature limits for all wetted components. Example: Viton<sup>®</sup> has a maximum limit of 176.7°C (350°F) but polypropylene has a maximum limit of only 79°C (175°F).



**CAUTION:** Maximum temperature limits are based upon mechanical stress only. Certain chemicals will significantly reduce maximum safe operating temperatures. Consult Chemical Resistance Guide (E4) for chemical compatibility and temperature limits.



**WARNING:** Prevention of static sparking — If static sparking occurs, fire or explosion could result. Pump, valves, and containers must be grounded to a proper grounding point when handling flammable fluids and whenever discharge of static electricity is a hazard.



**CAUTION:** Do not exceed 8.6 bar (125 psig) air supply pressure.



**CAUTION:** The process fluid and cleaning fluids must be chemically compatible with all wetted pump components. Consult Chemical Resistance Guide (E4).



**CAUTION:** Do not exceed 82°C (180°F) air inlet temperature for Pro-Flo X<sup>™</sup> models.



**CAUTION:** Pumps should be thoroughly flushed before installing into process lines. FDA and USDA approved pumps should be cleaned and/or sanitized before being used.



**CAUTION:** Always wear safety glasses when operating pump. If diaphragm rupture occurs, material being pumped may be forced out air exhaust.



**CAUTION:** Before any maintenance or repair is attempted, the compressed air line to the pump should be disconnected and all air pressure allowed to bleed from pump. Disconnect all intake, discharge and air lines. Drain the pump by turning it upside down and allowing any fluid to flow into a suitable container.



**CAUTION:** Blow out air line for 10 to 20 seconds before attaching to pump to make sure all pipeline debris is clear. Use an in-line air filter. A 5μ (micron) air filter is recommended.



**NOTE:** When installing 2-piece PTFE diaphragms, it is important to tighten outer pistons simultaneously (turning in opposite directions) to ensure tight fit. (See torque specifications in Section 7.)



**NOTE:** Before starting disassembly, mark a line from each liquid chamber to its corresponding air chamber. This line will assist in proper alignment during reassembly.



**CAUTION:** Pro-Flo X<sup>™</sup> pumps are available with a single-point-exhaust option. Do not use non-single-point-exhaust pumps in a submersible application.



**CAUTION:** Tighten all hardware prior to installation.

## WILDEN PUMP DESIGNATION SYSTEM

# PX2 SANIFLO™ HYGIENIC SERIES

25 mm (1") Pump  
Maximum Flow Rate:  
153 lpm (41 gpm)

## LEGEND

XPX2 / XXXX / XXX / XX / XX / XXXX

MODEL

GASKETS

SPECIALTY  
CODE  
(if applicable)

BALL VALVES

DIAPHRAGMS

AIR VALVE

CENTER SECTION

WETTED PARTS &amp; OUTER PISTON

## MATERIAL CODES

## MODEL

PX2 = 25 mm (1")

XPX2 = 25 mm (1") ATEX

WETTED PARTS/  
OUTER PISTON

SS = 316L STAINLESS STEEL

SZ = 316L STAINLESS STEEL/  
NO PISTON

## CENTER SECTION

NN = NICKEL PLATED ALUMINUM

## AIR VALVE

N = NICKEL PLATED ALUMINUM

## DIAPHRAGMS

FBS = SANITARY BUNA<sup>1</sup>  
(two yellow dots)FES = SANITARY EPDM<sup>1</sup>  
(two blue dots)FSS = SANIFLEX™<sup>1</sup>FWL = SANITARY WIL-FLEX™  
IPD<sup>1,3,4</sup>FWS = SANITARY WIL-FLEX™<sup>1</sup>

LEL = PTFE-EPDM BACKED

LAMINATE IPD<sup>1,2,3,4</sup>TEU = PTFE w/EPDM BACKUP<sup>1,2</sup>

TSU = PTFE w/SANIFLEX™

BACK-UP<sup>1,2</sup>

TSS = FULL STROKE PTFE

w/SANIFLEX™ BACK-UP<sup>1,2</sup>

TWS = FULL STROKE PTFE

w/WIL-FLEX™ BACK-UP<sup>1,2</sup>

## BALL VALVES

FB = SANITARY BUNA<sup>1,3,4</sup>  
(red dot)FE = SANITARY EPDM<sup>1,3,4</sup>  
(green dot)FS = SANIFLEX™<sup>1,3,4</sup>FW = SANITARY WIL-FLEX™<sup>1,3,4</sup>TF = PTFE<sup>1,2,3,4</sup>

## GASKET

FB = SANITARY BUNA-N<sup>1,3,4</sup>  
(red dot)FE = SANITARY EPDM<sup>1,3,4</sup>  
(green dot)FV = SANITARY VITON®<sup>1,3,4</sup>  
(one white/one  
yellow dots)TF = PTFE<sup>1,2,3,4</sup>

## NOTE:

<sup>1</sup>Meets Requirements of FDA  
CFR21.177<sup>2</sup>Meets Requirements of USP  
Class VI<sup>3</sup>Required for EHEDG Certification<sup>4</sup>Required for 3-A Certification

## SPECIALTY CODES

0770 Saniflo HS

0771 Saniflo HS, w/Swivel Stand

0772 Saniflo HS, Wil-Gard 110V

0773 Saniflo HS, Wil-Gard 220V

0774 Saniflo HS, Wil-Gard 110V w/Swivel Stand (Required for 3-A cert.)

0775 Saniflo HS, Wil-Gard 220V w/Swivel Stand (Required for 3-A cert.)

0778 Saniflo HS DIN Connection

0779 Saniflo HS, w/Swivel Stand DIN Connection

0780 Saniflo HS, Wil-Gard 110V DIN Connection

0781 Saniflo HS, Wil-Gard 220V DIN Connection

0782 Saniflo HS, Wil-Gard 110V w/Swivel Stand DIN Connection

0783 Saniflo HS, Wil-Gard 220V w/Swivel Stand DIN Connection

0784 Saniflo HS SMS Connection

0785 Saniflo HS, w/Swivel Stand SMS Connection

0786 Saniflo HS, Wil-Gard 110V SMS Connection

0787 Saniflo HS, Wil-Gard 220V SMS Connection

0788 Saniflo HS, Wil-Gard 110V w/Swivel Stand SMS Connection

0789 Saniflo HS, Wil-Gard 220V w/Swivel Stand SMS Connection

NOTE: MOST ELASTOMERIC MATERIALS USE COLORED DOTS FOR IDENTIFICATION.

Viton® is a registered trademark of DuPont Dow Elastomers.

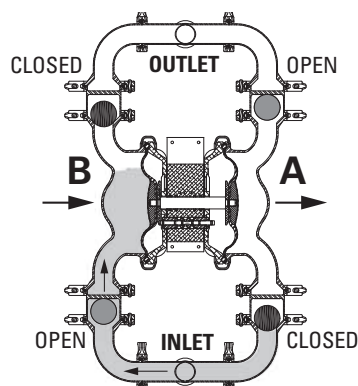
Hytrel® is a registered trademark of DuPont Dow Elastomers.

Santoprene® is a registered trademark of Monsanto Company, licensed to Advanced Elastomer Systems, L.P.

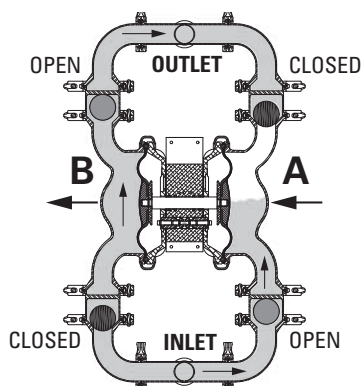


## HOW IT WORKS—PUMP

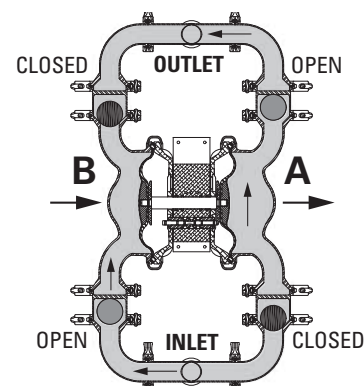
The Wilden diaphragm pump is an air-operated, positive displacement, self-priming pump. These drawings show flow pattern through the pump upon its initial stroke. It is assumed the pump has no fluid in it prior to its initial stroke.



**FIGURE 1** The air valve directs pressurized air to the back side of diaphragm A. The compressed air is applied directly to the liquid column separated by elastomeric diaphragms. The diaphragm acts as a separation membrane between the compressed air and liquid, balancing the load and removing mechanical stress from the diaphragm. The compressed air moves the diaphragm away from the center of the pump. The opposite diaphragm is pulled in by the shaft connected to the pressurized diaphragm. Diaphragm B is on its suction stroke; air behind the diaphragm has been forced out to atmosphere through the exhaust port of the pump. The movement of diaphragm B toward the center of the pump creates a vacuum within chamber B. Atmospheric pressure forces fluid into the inlet manifold forcing the inlet valve ball off its seat. Liquid is free to move past the inlet valve ball and fill the liquid chamber (see shaded area).



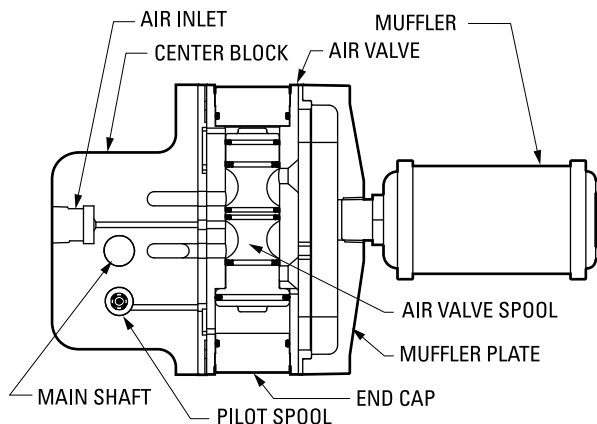
**FIGURE 2** When the pressurized diaphragm, diaphragm A, reaches the limit of its discharge stroke, the air valve redirects pressurized air to the back side of diaphragm B. The pressurized air forces diaphragm B away from the center while pulling diaphragm A to the center. Diaphragm B is now on its discharge stroke. Diaphragm B forces the inlet valve ball onto its seat due to the hydraulic forces developed in the liquid chamber and manifold of the pump. These same hydraulic forces lift the discharge valve ball off its seat, forcing fluid to flow through the pump discharge. The movement of diaphragm A toward the center of the pump creates a vacuum within liquid chamber A. Atmospheric pressure forces fluid into the inlet manifold of the pump. The inlet valve ball is forced off its seat allowing the fluid being pumped to fill the liquid chamber.



**FIGURE 3** At completion of the stroke, the air valve again redirects air to the back side of diaphragm A, which starts diaphragm B on its exhaust stroke. As the pump reaches its original starting point, each diaphragm has gone through one exhaust and one discharge stroke. This constitutes one complete pumping cycle. The pump may take several cycles to completely prime depending on the conditions of the application.

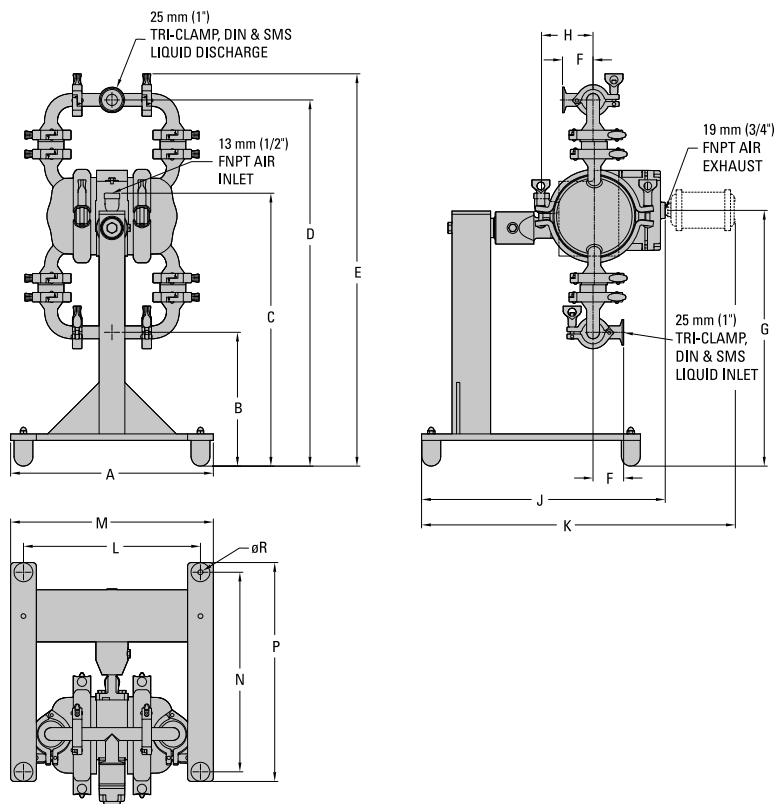


## HOW IT WORKS—AIR DISTRIBUTION SYSTEM



The Pro-Flo X<sup>™</sup> patented air distribution system incorporates two moving parts: the air valve spool and the pilot spool. The heart of the system is the air valve. This valve design incorporates an unbalanced spool. The smaller end of the spool is pressurized continuously, while the large end is alternately pressurized, then exhausted, to move the spool. The air valve spool directs pressurized air to one air chamber while exhausting the other. The air causes the main shaft/diaphragm assembly to shift to one side — discharging liquid on that side and pulling liquid in on the other side. When the shaft reaches the end of its stroke, the inner piston actuates the pilot spool, which pressurizes and exhausts the large end of the air valve spool. The repositioning of the air valve spool routes the air to the other air chamber.

### PX2 Saniflo™ Swivel

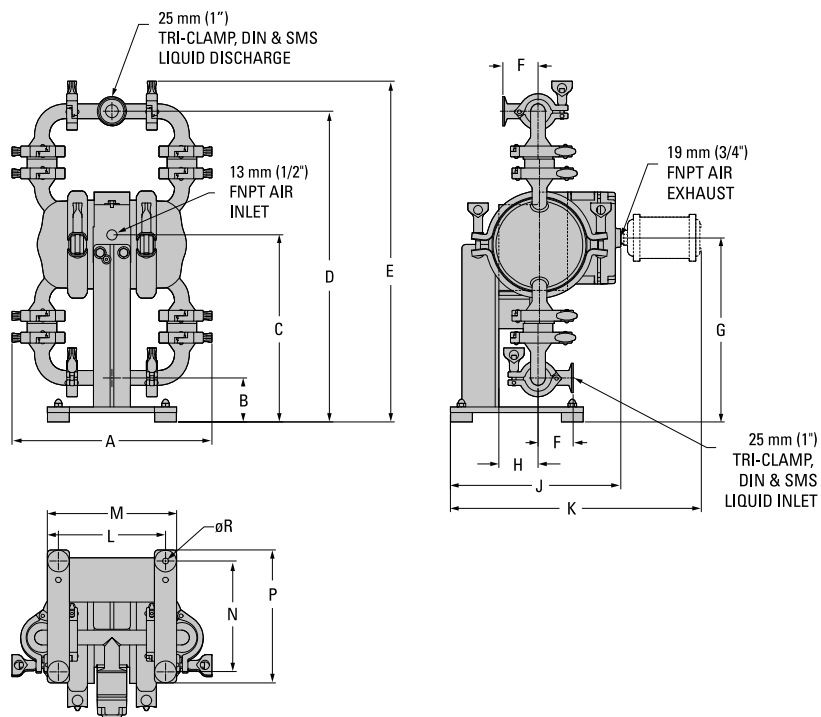


### DIMENSIONS

ITEM	METRIC (mm)	STANDARD (inch)
A	401	15.8
B	264	10.4
C	538	21.2
D	721	28.4
E	775	30.5
F	61	2.4
G	505	19.9
H	104	4.1
J	480	18.9
K	620	24.4
L	351	13.8
M	401	15.8
N	394	15.5
P	432	17.0
R	Ø10	Ø.4

Rev B

### PX2 Saniflo™ Fixed



### DIMENSIONS

ITEM	METRIC (mm)	STANDARD (inch)
A	343	13.5
B	76	3.0
C	323	12.7
D	533	21.0
E	587	23.1
F	61	2.4
G	315	12.4
H	69	2.7
J	292	11.5
K	432	17.0
L	185	7.3
M	224	8.8
N	191	7.5
P	229	9.0
R	Ø10	Ø.4

## SUGGESTED INSTALLATION

Wilden pumps are designed to meet the performance requirements of even the most demanding pumping applications. They have been designed and manufactured to the highest standards and are available in a variety of liquid path materials to meet your chemical resistance needs. Refer to the performance section of this manual for an in-depth analysis of the performance characteristics of your pump. Wilden offers the widest variety of elastomer options in the industry to satisfy temperature, chemical compatibility, abrasion resistance and flex concerns.

The suction pipe size should be equivalent or larger than the diameter of the suction inlet on your Wilden pump. The suction hose must be non-collapsible, reinforced type as these pumps are capable of pulling a high vacuum. Discharge piping should also be equivalent or larger than the diameter of the pump discharge to minimize friction losses. It is critical that all fittings and connections are airtight or a reduction or loss of pump suction capability will result.

**INSTALLATION:** Months of careful planning, study, and selection efforts can result in unsatisfactory pump performance if installation details are left to chance.

Premature failure and long term dissatisfaction can be avoided if reasonable care is exercised throughout the installation process.

**LOCATION:** Noise, safety, and other logistical factors usually dictate where equipment will be situated on the production floor. Multiple installations with conflicting requirements can result in congestion of utility areas, leaving few choices for additional pumps.

Within the framework of these and other existing conditions, every pump should be located in such a way that six key factors are balanced against each other to maximum advantage.

**ACCESS:** First of all, the location should be accessible. If it's easy to reach the pump, maintenance personnel will have an easier time carrying out routine inspections and adjustments. Should major repairs become necessary, ease of access can play a key role in speeding the repair process and reducing total downtime.

**AIR SUPPLY:** Every pump location should have an air line large enough to supply the volume of air necessary to achieve the desired pumping rate. Do not exceed the maximum rated air pressure.

For best results, the pumps should use a 5 $\mu$  (micron) air filter, needle valve and regulator. The use of an air filter before the pump will ensure that the majority of any pipeline contaminants will be eliminated.

**SOLENOID OPERATION:** When operation is controlled by a solenoid valve in the air line, three-way valves should be used. This valve allows trapped air between the valve and the pump to bleed off which improves pump performance.

**MUFFLER:** Sound levels are reduced below OSHA specifications using the standard Wilden muffler. Other mufflers can be used to further reduce sound levels, but they usually reduce pump performance.

**ELEVATION:** Selecting a site that is well within the pump's dynamic lift capability will assure that loss-of-prime issues will be eliminated. In addition, pump efficiency can be adversely affected if proper attention is not given to site location.

**PIPING:** Final determination of the pump site should not be made until the piping challenges of each possible location have been evaluated. The impact of current and future installations should be considered ahead of time to make sure that inadvertent restrictions are not created for any remaining sites.

The best choice possible will be a site involving the shortest and straightest hook-up of suction and discharge piping. Unnecessary elbows, bends, and fittings should be avoided. Pipe sizes should be selected to keep friction losses within practical limits. All piping should be supported independently of the pump. In addition, the piping should be aligned to avoid placing stress on the pump fittings.

Flexible hose can be installed to aid in absorbing the forces created by the natural reciprocating action of the pump. If the pump is to be bolted down to a solid location, a mounting pad placed between the pump and the foundation will assist in minimizing pump vibration. Flexible connections between the pump and rigid piping will also assist in minimizing pump vibration. If quick-closing valves are installed at any point in the discharge system, or if pulsation within a system becomes a problem, a surge suppressor (SD Equalizer<sup>®</sup>) should be installed to protect the pump, piping and gauges from surges and water hammer.

If the pump is to be used in a self-priming application, make sure that all connections are airtight and that the suction lift is within the model's ability. **NOTE:** Materials of construction and elastomer material have an effect on suction lift parameters. Please refer to the performance section for specifics.

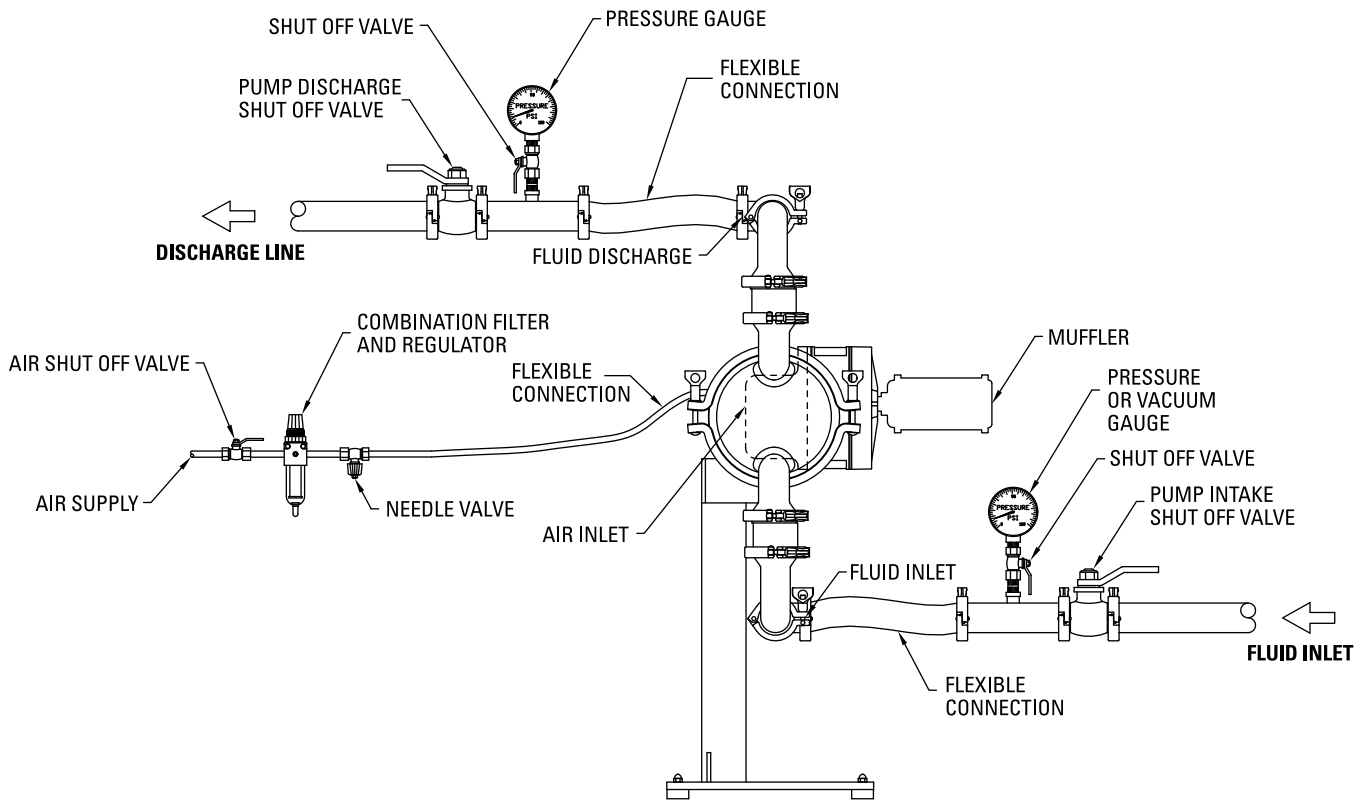
When pumps are installed in applications involving flooded suction or suction head pressures, a gate valve should be installed in the suction line to permit closing of the line for pump service.

Pumps in service with a positive suction head are most efficient when inlet pressure is limited to 0.5–0.7 bar (7–10 psig). Premature diaphragm failure may occur if positive suction is 0.7 bar (10 psig) and higher.

**SUBMERSIBLE APPLICATIONS:** Pro-Flo X<sup>™</sup> pumps can be used for submersible applications, when using the Pro-Flo X<sup>™</sup> Single-point-exhaust option. Pro-Flo<sup>®</sup> and Accu-Flo<sup>™</sup> pumps are not submersible.

**ALL WILDEN PUMPS ARE CAPABLE OF PASSING SOLIDS. A STRAINER SHOULD BE USED ON THE PUMP INTAKE TO ENSURE THAT THE PUMP'S RATED SOLIDS CAPACITY IS NOT EXCEEDED.**

## SUGGESTED INSTALLATION



**NOTE:** In the event of a power failure, the air shut off valve should be closed, if restarting of the pump is not desirable once power is regained.

**AIR OPERATED PUMPS:** To stop the pump from operating in an emergency situation, simply close the air shut off valve (user supplied) installed in the air supply line. A properly functioning

valve will stop the air supply to the pump, therefore stopping output. This air shut off valve should be located far enough away from the pumping equipment such that it can be reached safely in an emergency situation.

## SUGGESTED OPERATION & MAINTENANCE

**OPERATION:** Pro-Flo X™ pumps are pre-lubricated, and do not require in-line lubrication. Additional lubrication will not damage the pump, however if the pump is heavily lubricated by an external source, the pump's internal lubrication may be washed away. If the pump is then moved to a non-lubricated location, it may need to be disassembled and re-lubricated as described in the ASSEMBLY/DISASSEMBLY INSTRUCTIONS.

Pump discharge rate can be controlled by limiting the volume and/or pressure of the air supply to the pump. An air regulator is used to regulate air pressure. A needle valve is used to regulate volume. Pump discharge rate can also be controlled by throttling the pump discharge by partially closing a valve in the discharge line of the pump. This action increases friction loss which reduces flow rate. (See Section 5.) This is useful when the need exists to control the pump from a remote location. When the pump discharge pressure equals or exceeds the air supply pressure, the pump will stop; no bypass or pressure relief valve is needed, and pump damage will not occur. The pump has reached a

"deadhead" situation and can be restarted by reducing the fluid discharge pressure or increasing the air inlet pressure. The Wilden Pro-Flo X™ pumps run solely on compressed air and do not generate heat, therefore your process fluid temperature will not be affected.

**MAINTENANCE AND INSPECTIONS:** Since each application is unique, maintenance schedules may be different for every pump. Frequency of use, line pressure, viscosity and abrasiveness of process fluid all affect the parts life of a Wilden pump. Periodic inspections have been found to offer the best means for preventing unscheduled pump downtime. Personnel familiar with the pump's construction and service should be informed of any abnormalities that are detected during operation.

**RECORDS:** When service is required, a record should be made of all necessary repairs and replacements. Over a period of time, such records can become a valuable tool for predicting and preventing future maintenance problems and unscheduled downtime. In addition, accurate records make it possible to identify pumps that are poorly suited to their applications.

## TROUBLESHOOTING

### ***Pump will not run or runs slowly.***

1. Ensure that the air inlet pressure is at least 0.4 bar (5 psig) above startup pressure and that the differential pressure (the difference between air inlet and liquid discharge pressures) is not less than 0.7 bar (10 psig).
2. Check air inlet filter for debris (see recommended installation).
3. Check for extreme air leakage (blow by) which would indicate worn seals/bore in the air valve, pilot spool, main shaft.
4. Disassemble pump and check for obstructions in the air passageways or objects which would obstruct the movement of internal parts.
5. Check mating surfaces of flap valve assembly.
6. Check for sticking ball check valves. If material being pumped is not compatible with pump elastomers, swelling may occur. Replace ball check valves and seats with proper elastomers. Also, as the check valve balls wear out, they become smaller and can become stuck in the seats. In this case, replace balls and seats.
7. Check for broken inner piston which will cause the air valve spool to be unable to shift.
8. Remove plug from pilot spool exhaust.

### ***Pump runs but little or no product flows.***

1. Check for pump cavitation; slow pump speed down to allow thick material to flow into liquid chambers.

2. Verify that vacuum required to lift liquid is not greater than the vapor pressure of the material being pumped (cavitation).
3. Check for sticking ball check valves. If material being pumped is not compatible with pump elastomers, swelling may occur. Replace ball check valves and seats with proper elastomers. Also, as the check valve balls wear out, they become smaller and can become stuck in the seats. In this case, replace balls and seats.

### ***Pump air valve freezes.***

1. Check for excessive moisture in compressed air. Either install a dryer or hot air generator for compressed air. Alternatively, a coalescing filter may be used to remove the water from the compressed air in some applications.

### ***Air bubbles in pump discharge.***

1. Check for ruptured diaphragm.
2. Check tightness of outer pistons (refer to Section 7).
3. Check tightness of fasteners and integrity of o-rings and seals, especially at intake manifold.
4. Ensure pipe connections are airtight.

### ***Product comes out air exhaust.***

1. Check for diaphragm rupture.
2. Check tightness of outer pistons to shaft.



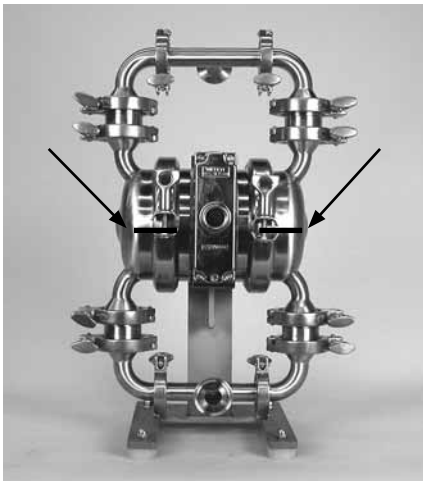
## PUMP DISASSEMBLY

### Tools Required:

- Adjustable Wrench
- Vise equipped with soft jaws (such as plywood, plastic or other suitable material)

**CAUTION:** Before any maintenance or repair is attempted, the compressed air line to the pump should be disconnected and all air pressure allowed to bleed from the pump. Disconnect all intake, discharge, and air lines. Drain the pump by turning it upside down and allowing any fluid to flow into a suitable container. Be aware of any hazardous effects of contact with your process fluid.

**NOTE:** The model photographed for these instructions incorporates PTFE diaphragms.



### Step 1

Prior to assembly, alignment marks should be placed on the liquid chambers and air chambers to assist with proper alignment during reassembly.



### Step 2

Loosen the wing nut and remove both discharge manifold clamp bands.



### Step 3

Remove the discharge manifold and manifold gaskets.



## Step 4

Next, remove the clamp bands that secure the ball valve housing to the liquid chamber.



## Step 5

Next, remove the ball valve housing, valve ball and gasket.



## Step 6

Loosen the wing nut and remove the inlet manifold clamp bands.



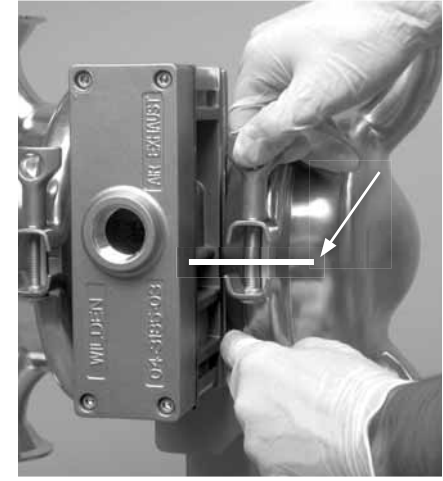
## Step 7

Next, remove the clamp bands that secure the ball valve housing to the liquid chamber.



## Step 8

Next, remove the ball valve housing, valve ball and gasket from liquid chamber. To ensure proper alignment during reassembly of manifold/liquid chamber interface, turn off-set portion of valve housing to the left or to the right. This procedure works for the inlet manifold and discharge manifold connections.



## Step 9

Now the large clamp bands can be removed. NOTE: Prior to assembly, alignment marks should be placed on the liquid chambers and air chambers to assist with proper alignment during reassembly.



**Step 10A**

Next, remove the liquid chamber from the center section assembly.



**Step 10B**

If your pump is fitted with an integral piston diaphragm (IPD), when you remove the liquid chamber you will notice that there is no outer piston.



**Step 11A**

Using two adjustable wrenches, turning in the opposite direction, loosen and remove one of the two outer pistons.



**Step 11B**

If your pump is fitted with an IPD, the procedure for removing the diaphragm is slightly different. In this case, simply grasp the diaphragm in two locations and turn in a counter-clockwise direction.



**Step 12A**

After loosening and removing the outer piston, the remaining diaphragm assembly and shaft can be removed from the center section assembly.



**Step 12B**

If your pump is fitted with an IPD, the procedure for removing the diaphragm is the same.

## WIL-GARD™ DIAPHRAGM SENSOR

### Wil-Gard™ Diaphragm Sensor Removal



#### Step 1

After removing the inlet and discharge manifold assemblies, disconnect the Wil-Gard™ module from the sensor wires.



#### Step 2

Next, remove the large clamp bands and the liquid chamber on either side of the pump.



#### Step 3

The Wil-Gard™ sensor cables can be easily removed from the diaphragm assembly by simply pulling them from between the primary and back-up diaphragm.

### Wil-Gard™ Diaphragm Sensor Installation



#### Step 1

The Wil-Gard™ sensor wires must be installed between the primary diaphragm and the back-up diaphragm, on both sides of the pump, at the 6 o'clock position. They should be positioned approximately half the distance to the shaft from the edge of the diaphragm.



#### Step 2

Prior to installing the liquid chamber, and after positioning the Wil-Gard™ sensor cable between the primary and back-up diaphragms, run the sensor cable along the diaphragm bead but outside the pump. Now install the liquid chamber and large clamp band.



#### Step 3

When installing the liquid chamber and large clamp band, route the Wil-Gard™ sensor cable to the inside of the large clamp band fastener. Next, reconnect the Wil-Gard™ module. **NOTE:** Use caution to ensure that the sensor wires are not damaged or pinched by the clamp band.

## SWIVEL PUMP STAND OPTION

*For ease of maintenance and cleaning, Wilden offers an optional swivel pump stand. The swivel pump stand allows the pump to be drained by rotating the pump so that the fluid can flow out of the discharge and into a suitable container.*

### Draining Pump Contents

To drain the pump of its contents, first disconnect the inlet and discharge connections. Next loosen the anti-rotation bolt (item #1) by turning counter-clockwise. Do not remove the bolt; only loosen the bolt two turns. After loosening the anti-rotation bolt, rotate pump 180°. This will allow the contents within the pump to flow out of the discharge and into a suitable container. After draining the pump, rotate the pump back to the upright position and tighten the anti-rotation bolt.

### Removing Pump From Swivel Pump Stand

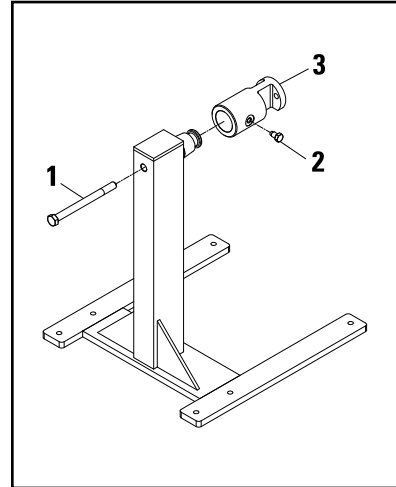
Saniflo<sup>™</sup> Hygienic<sup>™</sup> series pumps are very heavy. It is recommended that the pump be disassembled while attached to the stand. If it is necessary to remove the pump from the stand while fully assembled, use a hoist or mechanical means to support the pump as it is removed from the stand.

To remove your Saniflo<sup>™</sup> Hygienic<sup>™</sup> series pump from the swivel pump stand, first loosen the anti-rotation bolt (item #1) by turning counter-clockwise. Next, ensure the entire pump weight is supported by hoist and loosen the locking pin (item #2) by turning counter-clockwise. This will allow the pump to be removed from the stand.

**CAUTION:** Removal of the locking pin (item #2) will allow the pump to fall from the stand, potentially causing injury to the operator or personnel in the immediate area. Never operate or store the pump without the locking pin (item #2) in place and properly torqued.

**NOTE:** The center block-to-bushing bolts (item #4) attach the center block mounting bushing (item #3) to the center block (not shown). These bolts do not need to be removed to remove the pump from the stand.

**NOTE:** Torque values are located in Section 7 of this manual.



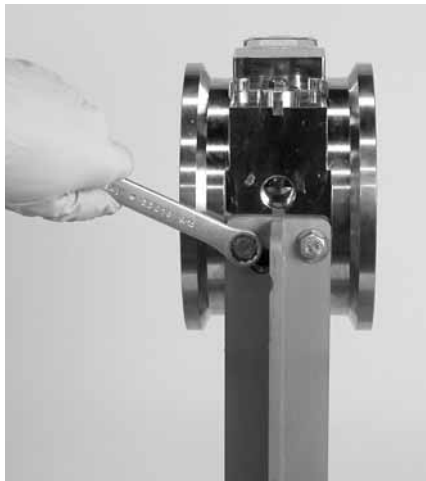
## AIR VALVE / CENTER SECTION DISASSEMBLY

### Tools Required:

Tools Required:

- 3/16" Hex Head Wrench
- Snap Ring Pliers
- O-Ring Pick
- 9/16" Wrench

**CAUTION:** Before any maintenance or repair is attempted, the compressed air line to the pump should be disconnected and all air pressure allowed to bleed from the pump. Disconnect all intake, discharge, and air lines. Drain the pump by turning it upside down and allowing any fluid to flow into a suitable container. Be aware of hazardous effects of contact with your process fluid.



### Step 1

Using a 9/16" wrench, loosen the bolts that connect the center section to the stand. **CAUTION:** With bolts removed, the center section is no longer attached to the stand and must be supported so that it does not fall from the stand.



### Step 2

Remove the center section from the stand.



### Step 3

Using a 3/16" hex wrench, loosen air valve bolts.

## AIR VALVE / CENTER SECTION DISASSEMBLY



### Step 4

Remove muffler plate and air valve bolts from air valve assembly exposing muffler gasket for inspection. Replace if necessary.



### Step 5

Lift away air valve assembly and remove air valve gasket for inspection. Replace if necessary.



### Step 6

Remove air valve end cap to expose air valve spool by simply lifting up on end cap once air valve bolts are removed. NOTE: Pro-Flo V™ air valve incorporates an end cap at both ends of the air valve.



### Step 7

Remove the air valve spool from the air valve body by threading one air valve bolt into the end of the air valve spool and gently sliding the spool out of the air valve body. Inspect seals for signs of wear and replace entire assembly if necessary. Use caution when handling air valve spool to prevent damaging seals. NOTE: seals should not be removed from assembly. Seals are not sold separately.



### Step 8

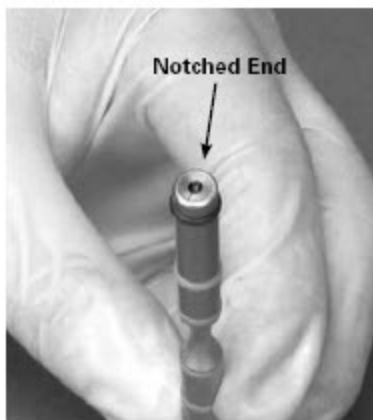
Remove pilot sleeve retaining snap ring on both sides of center section with snap ring pliers.



### Step 9

Remove pilot spool sleeve from center section.

## AIR VALVE / CENTER SECTION DISASSEMBLY



### Step 10

Using an o-ring pick, gently remove the o-ring from the opposite side of the "notched end" on one side of the pilot spool. Gently remove the pilot spool from pilot spool sleeve and inspect for nicks, gouges and wear. Replace pilot sleeve or outer sleeve o-rings if necessary. During re-assembly, never insert the pilot spool into the sleeve with the "notched end" first, this end incorporates the urethane o-ring and will be damaged as it slides over the ports cut in the sleeve. NOTE: seals should not be removed from pilot spool. Seals are not sold separately.



## REASSEMBLY HINTS & TIPS

### ASSEMBLY:

Upon performing applicable maintenance to the air distribution system, the pump can now be reassembled. Please refer to the disassembly instructions for photos and parts placement. To reassemble the pump, follow the disassembly instructions in reverse order. The air distribution system needs to be assembled first, then the diaphragms and finally the wetted path. The following tips will assist in the assembly process.

- Lubricate air valve bore, center section shaft and pilot spool bore with NLGI grade 2 white EP bearing grease or equivalent.
- Clean the inside of the center section shaft bore to ensure no damage is done to new shaft seals.
- A small amount of NLGI grade 2 white EP bearing grease can be applied to the muffler and air valve gaskets to locate gaskets during assembly.
- Make sure that the exhaust port on the muffler plate is centered between the two exhaust ports on the center section.
- Stainless bolts should be lubed to reduce the possibility of seizing during tightening.
- Use a mallet to tap lightly on the large clamp bands to seat the diaphragm before tightening.

### MAXIMUM TORQUE SPECIFICATIONS

Description of Part	Max. Torque
Air Valve	11.3 N•m (100 in-lbs)
Dial set screw	11.3 N•m (100 in-lbs)
Outer pistons, all diaphragms	47.5 N•m (35 in-lbs)
Center block-to-stand bolt	44.7 N•m (33 in-lbs)
Center block-to-bushing bolt	44.7 N•m (33 in-lbs)
Locking Pin	44.7 N•m (33 in-lbs)
Anti-Rotation Bolt	67.8 N•m (50 in-lbs)



**NOTE:** To ensure proper alignment during reassembly of manifold/liquid chamber interface, turn off-set portion of valve housing to the left or to the right. This procedure works for the inlet manifold and discharge manifold connections.

### SHAFT SEAL INSTALLATION:

#### PRE-INSTALLATION

- Once all of the old seals have been removed, the inside of the bushing should be cleaned to ensure no debris is left that may cause premature damage to the new seals.

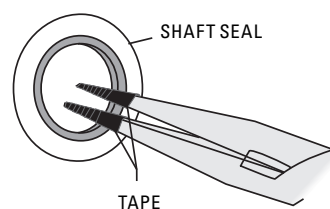
#### INSTALLATION

The following tools can be used to aid in the installation of the new seals:

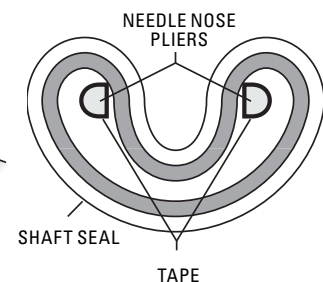
Needle Nose Pliers  
Phillips Screwdriver  
Electrical Tape

- Wrap electrical tape around each leg of the needle nose pliers (heat shrink tubing may also be used). This is done to prevent damaging the inside surface of the new seal.
- With a new seal in hand, place the two legs of the needle nose pliers inside the seal ring. (See Figure A.)
- Open the pliers as wide as the seal diameter will allow, then with two fingers pull down on the top portion of the seal to form kidney bean shape. (See Figure B.)
- Lightly clamp the pliers together to hold the seal into the kidney shape. Be sure to pull the seal into as tight of a kidney shape as possible, this will allow the seal to travel down the bushing bore easier.
- With the seal clamped in the pliers, insert the seal into the bushing bore and position the bottom of the seal into the correct groove. Once the bottom of the seal is seated in the groove, release the clamp pressure on the pliers. This will allow the seal to partially snap back to its original shape.
- After the pliers are removed, you will notice a slight bump in the seal shape. Before the seal can be properly resized, the bump in the seal should be removed as much as possible. This can be done with either the Phillips screwdriver or your finger. With either the side of the screwdriver or your finger, apply light pressure to the peak of the bump. This pressure will cause the bump to be almost completely eliminated.
- Lubricate the edge of the shaft with NLGI grade 2 white EP bearing grease.
- Slowly insert the center shaft with a rotating motion. This will complete the resizing of the seal.
- Perform these steps for the remaining seals.

**Figure A**



**Figure B**



## CLEANING - CIP

The design of the PX2 HS pump allows for ease of cleaning. The PX2 HS pump can be cleaned in place without disassembly. Before any cleaning is attempted, ensure that the cleaning fluids are compatible with all wetted components.

***For best cleaning results consider the following information prior to cleaning the PX2 HS pump.***

- For best Clean in Place (CIP) results, the pump should be configured to either the EHEDG or 3-A configurations.
- Actual CIP effectiveness with pump user's product(s) and processes should be validated on location by the end user's quality assurance personnel to meet internal guidelines. Post cleaning swab test is one method to accomplish this.
- The pump user should establish periodic inspections with full tear down to verify that the CIP processes continue to be effective as first validated.
- For extending diaphragm life when CIP pressures feed into the pump exceed 10 psig (0.7 bar), an optional diaphragm balancing device is suggested.

***The following are some details to consider when cleaning the PX2 HS pump.***

- Through the EHEDG certification process, the PX2 HS pump has been validated to clean equivalent to the inlet tubing of the same diameter. The cleaning chemical supplier should be consulted and advised of this for their chemical solution and application. The same guideline for duration of cleaning cycle and temperature of cleaning fluid apply.

- Suggested flow rate for the PX2 HS pump is 15 gpm minimum/3.4 m<sup>3</sup>/hr (usually higher is better).
- Typical CIP temperature is 77 °C to 82 °C (170 °F to 180 °F).
- Typical chemicals include NaOH (sodium hydroxide) caustic for wash and light acid and sanitizers for rinse.
- Once an initial CIP regimen is established, it may need to be modified to accommodate specific process and product differences or requirements. The most common adjustments include:
  - Changing cleaning time (extended or reduced pre-rinse, wash, rinses).
  - Changing cleaning flow rate.
- The cleaning variables are related so that a pump user may be able to reduce the cleaning time by increasing the flow rate or chemical mix.
- Chlorinated sanitizers are known to cause premature failure of stainless steel and should be avoided.

***To Clean Pump***

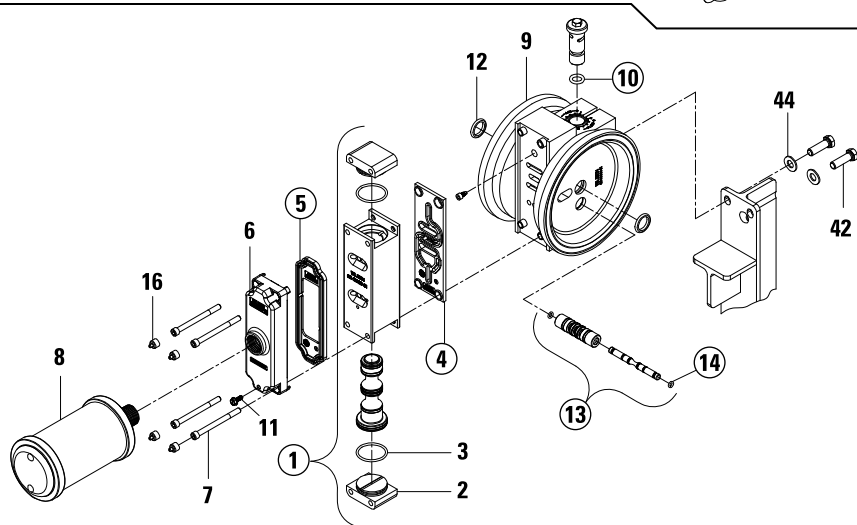
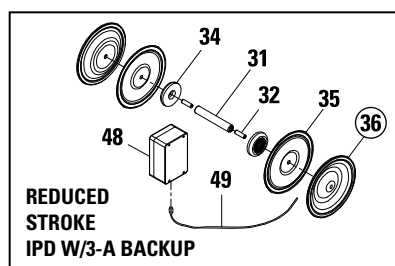
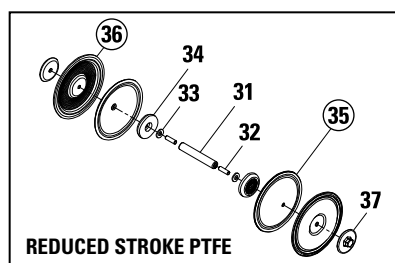
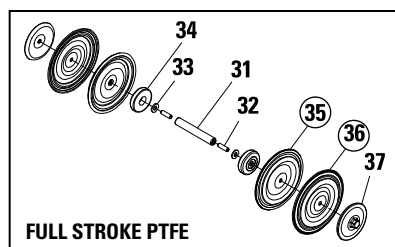
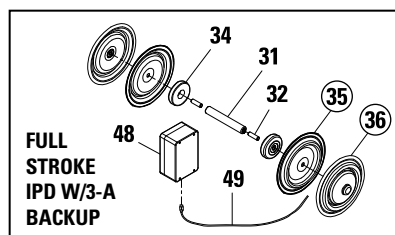
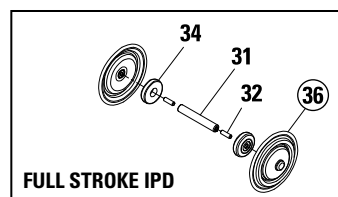
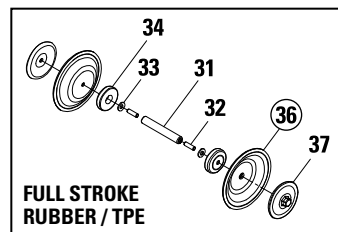
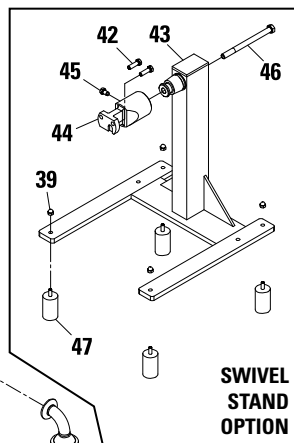
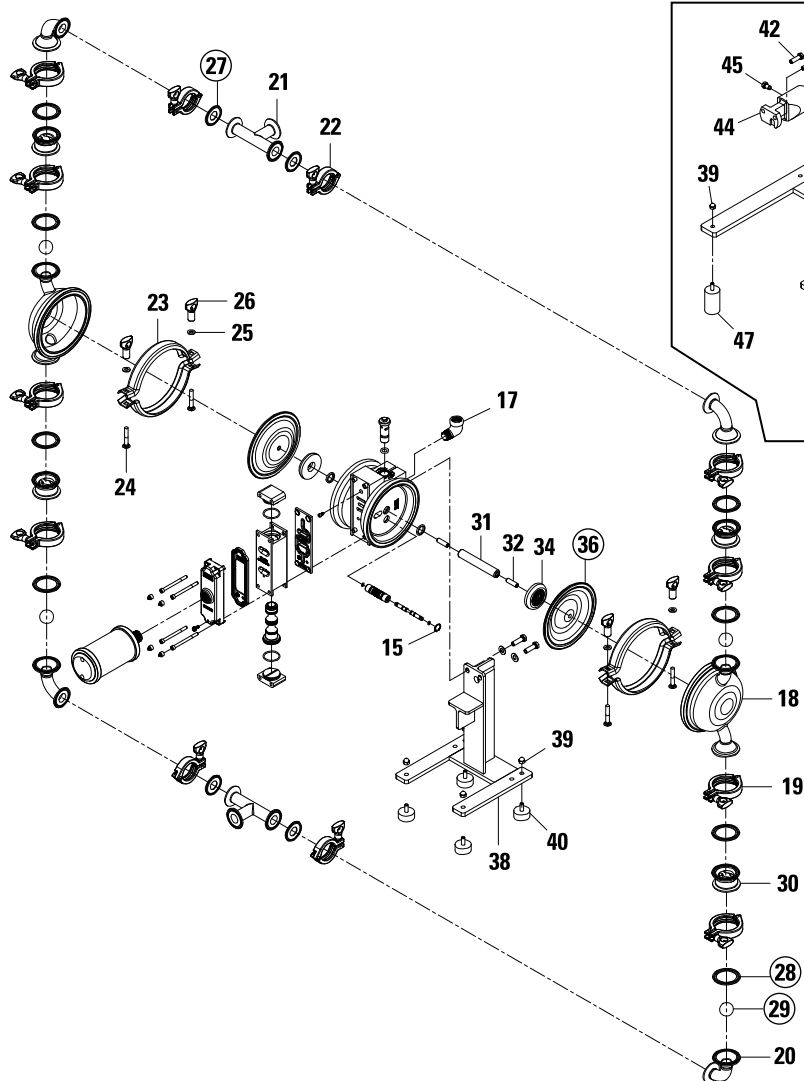
- Activate the CIP system while slowly cycling the pump.

NOTE: A typical the CIP temperature limit is 90 °C (195 °F). If the CIP temperature is greater than 90 °C (195 °F), damage to the pump may occur.

## EXPLODED VIEW & PARTS LISTING

### PX2 SANIFLO™

### EXPLODED VIEW



# EXPLODED VIEW & PARTS LISTING

## PX2 SANIFLO™

## PARTS LISTING

Item	Description	Qty	XPX2 HS P/N	XPX2 HS EHEDG P/N	XPX2 HS 3-A P/N
<b>AIR DISTRIBUTION COMPONENTS</b>					
1	Air Valve, Pro-Flo X™ Assembly¹	1	02-2030-06	02-2030-06	02-2030-06
2	End Cap, Pro-Flo X®	2	01-2335-06	01-2335-06	01-2335-06
3	O-Ring, End Cap (-126) (Ø1.362 X Ø.103)	2	01-2395-52	01-2395-52	01-2395-52
4	Gasket, Air Valve, Pro-Flo X®	1	02-2620-52	02-2620-52	02-2620-52
5	Gasket, Muffler Plate, Pro-Flo X®	1	02-3502-52	02-3502-52	02-3502-52
6	Muffler Plate, Pro-Flo X®	1	02-3185-06	02-3185-06	02-3185-06
7	Screw, SHC, 1/4"-20 X 3"	4	01-6001-03	01-6001-03	01-6001-03
8	Muffler	1	08-3510-06R	08-3510-06R	08-3510-06R
9	Center Section Assembly, Pro-Flo X®²	1	02-3149-06	02-3149-06	02-3149-06
10	O-Ring (-206), Air Adjuster Pin (Ø.484 X Ø.139)	1	00-1300-52	00-1300-52	00-1300-52
11	Screw, 10-32 X .50 Self-Tapping Grounding	1	04-6345-08	04-6345-08	04-6345-08
12	Shaft Seal	2	02-3210-55-225	02-3210-55-225	02-3210-55-225
13	Pilot Sleeve Assembly	1	02-3880-99	02-3880-99	02-3880-99
14	Pilot Spool Retaining O-Ring (Ø.208 X Ø.070)	2	04-2650-49-700	04-2650-49-700	04-2650-49-700
15	Retaining Ring	1	00-2650-03	00-2650-03	00-2650-03
16	Plug, 1/4" SHCS (3-A)	4	N/A	N/A	02-7825-17
17	Elbow, Street, 90° 1/2" NPT⁵	1	02-7843-03	02-7843-03	02-7843-03
<b>WETTED PATH COMPONENTS</b>					
▲ 18	Chamber, Liquid CIP 1" EHEDG	2	02-5002-10-385P	02-5002-10-385P	02-5002-10-385P
19	Clamp Band, Assy, Medium	8	02-7200-03-85	02-7200-03-85	02-7200-03-85
▲ 20	Elbow, 1" EHEDG	4	02-5240-10-385P	02-5240-10-385P	02-5240-10-385P
▲ 21	T-Section, 1" EHEDG	2	02-5160-10-385P	02-5160-10-385P	02-5160-10-385P
	T-Section, 1" EHEDG DIN	2	02-5160-10-386P	02-5160-10-386P	N/A
	T-Section, 1" EHEDG SMS	2	02-5160-10-387P	02-5160-10-387P	N/A
22	Clamp Band, Assy, Small	4	02-7100-03-85	02-7100-03-85	02-7100-03-85
23	Clamp Band Assy, Large³	2	02-7300-03-385	02-7300-03-385	02-7300-03-385
24	Bolt, RHSN, 5/16"-18 X 2"	4	08-6050-03-500	08-6050-03-500	08-6050-03-500
25	Washer, (.344 I.D. X .688 O.D. X .065 THK.)	4	02-6731-03	02-6731-03	02-6731-03
26	Wing Nut, Medium Clamp	4	08-6661-10	08-6661-10	08-6661-10
<b>GASKETS/VALVE BALLS</b>					
▲ 27	Gasket, 1"	4	*	*	*
▲ 28	Gasket, 2"	8	*	*	*
▲ 29	Valve Ball	4	*	*	*
<b>CHECK VALVE COMPONENTS</b>					
▲ 30	Ball Cage, 1" EHEDG	4	02-5350-10-385P	02-5350-10-385P	02-5350-10-385P
<b>FULL STROKE RUBBER/TPE/PTFE/FSIPD COMPONENTS</b>					
31	Shaft, P2 Pro-Flo™ (Non-PTFE)	1	02-3810-03	02-3810-03	02-3810-03
32	Shaft Stud, 3/8"-16 X 1-1/4"	2	02-6150-03-85	02-6150-03-85	02-6150-03-85
33	Spring, Disk	2	02-6802-08	N/A	N/A
34	Piston, Inner, P2 Pro-Flo™ (Non-PTFE)	2	02-3701-01	02-3701-01	02-3701-01
35	Diaphragm, Full Stroke PTFE, Back-Up	2	*	N/A	N/A
	Diaphragm, Full Stroke IPD, Back-Up (3-A)	2	N/A	N/A	02-1061-55
▲ 36	Diaphragm, Primary	2	*	N/A	N/A
	Diaphragm, Full Stroke PTFE, Primary	2	02-1040-55	N/A	N/A
	Diaphragm, Full Stroke, IPD, Primary	2	N/A	02-1031-57	02-1031-57
▲ 37	Piston, Outer, (Non-PTFE)	2	02-4550-10-385P	N/A	N/A
<b>REDUCED STROKE PTFE/SIPD COMPONENTS</b>					
31	Shaft, Pro-Flo™ (PTFE)	1	02-3840-03	02-3840-03	02-3840-03
32	Shaft Stud, 3/8"-16 X 1-1/4"	2	02-6150-03-85	02-6150-03-85	02-6150-03-85
33	Spring, Disk	2	02-6802-08	N/A	N/A
34	Piston, Inner, P2 Pro-Flo™ (PTFE)	2	02-3751-01	02-3751-01	02-3751-01
35	Diaphragm, Back-Up	2	*	N/A	N/A
	Diaphragm, Back-Up, IPD (3-A)	2	N/A	02-1060-55-85	02-1060-55-85
▲ 36	Diaphragm, Primary (PTFE)	2	02-1010-55	N/A	N/A
	Diaphragm, Integral Piston	2	N/A	02-1010-72-85	02-1010-72-85
▲ 37	Piston, Outer, (PTFE)	2	02-4600-10-385P	N/A	N/A

\*Refer to Elastomer Chart

▲ Product Contact Components

¹Air Valve Assembly includes items 2 and 3.

²Center Section Assembly includes items 10 and 12.

³Large Clamp Band Assembly includes items 24, 25 and 26

⁴Pump Stand Assembly includes items 39, 40, 41 and 42.

⁵Swivel Pump Stand Assembly includes items 39, 42, 44, 45, 46 and 47.

⁶Required for all 1" swivel stand models.

**All boldface items are primary wear parts.**

## EXPLODED VIEW & PARTS LISTING (CONT.)

### PX2 SANIFLO™

### PARTS LISTING

Item	Description	Qty	XPX2 HS P/N	XPX2 HS EHEDG P/N	XPX2 HS 3-A P/N
<b>FIXED STAND COMPONENTS</b>					
38	Stand, Pump, Assy. <sup>4</sup>	1	02-7652-10-385	02-7652-10-385	N/A
39	Nut, Cap, 5/16"-18, Pump Stand	4	08-6600-03-72	08-6600-03-72	08-6600-03-72
40	Pad, Pump Stand	4	08-7670-20	08-7670-20	N/A
41	Washer, (.406 I.D. X .812 O.D. X .065 Thk.)	2	04-6740-03	04-6740-03	N/A
42	Screw, HHC, 3/8"-16 X 1-1/4"	2	04-6190-03	04-6190-03	04-6190-03
<b>SWIVEL STAND COMPONENTS</b>					
43	Pump Stand, Swivel, Assy. <sup>5</sup> (3-A)	1	04-7655-03	04-7655-03	04-7655-03
44	Bushing, Center Block Mounting	1	15-7665-03	15-7665-03	15-7665-03
45	Locking Pin	1	08-7694-03	08-7694-03	08-7694-03
46	Screw, HHC, 1/2"-13 X 6"	1	15-6143-03	15-6143-03	15-6143-03
42	Screw, HHC, 3/8"-16 X 1-1/4"	2	04-6190-03	04-6190-03	04-6190-03
39	Nut, Cap, 5/16"-18, Pump Stand	4	08-6600-03-72	08-6600-03-72	08-6600-03-72
47	Pad, Pump Stand 2" (3-A)	4	08-7672-20	08-7672-20	08-7672-20
<b>ACCESSORY COMPONENTS</b>					
48	Control Module, Wil-Gard II, 110 (3-A)	1	65-8001-99	65-8001-99	65-8001-99
49	Sensor Cables, Wil-Gard II (3-A)	1	65-8020-99	65-8020-99	65-8020-99

\*Refer to Elastomer Chart

▲ Product Contact Components

<sup>1</sup>Air Valve Assembly includes items 2 and 3.

<sup>2</sup>Center Section Assembly includes items 10 and 12.

<sup>3</sup>Large Clamp Band Assembly includes items 24, 25 and 26

<sup>4</sup>Pump Stand Assembly includes items 39, 40, 41 and 42.

<sup>5</sup>Swivel Pump Stand Assembly includes items 39, 42, 44, 45, 46 and 47.

<sup>6</sup>Required for all 1" swivel stand models.

**All boldface items are primary wear parts.**

**▲ PX2 SANIFLO™ HS**

<b>MATERIAL</b>	<b>Diaphragms (Color Code)</b>	<b>BACK-UP DIAPHRAGMS REDUCED STROKE (Color Code)</b>	<b>BACK-UP DIAPHRAGMS FULL STROKE (Color Code)</b>	<b>VALVE BALL (Color Code)</b>	<b>GASKET, 1" (Color Code)</b>	<b>GASKET, 2" (Color Code)</b>
Full Stroke FDA Buna-N	02-1010-69 (2 yellow dots)	N/A	N/A	02-1086-69 (2 yellow dots)	02-1320-69-85 (red dot)	08-1375-69 (red dot)
Full Stroke FDA EPDM	02-1010-74 (2 blue dots)	02-1060-54 (blue dot)	N/A	02-1086-74 (2 blue dots)	02-1320-74-85 (green dot)	08-1375-74 (green dot)
Full Stroke Saniflex™	02-1010-56 (cream)	02-1060-56 (cream)	02-1065-56 (cream)	02-1085-56 (cream)	N/A	N/A
Reduced Stroke PTFE	**	N/A	N/A	02-1085-55 (white)	02-1320-55-85 (white)	08-1375-55 (white)
Full Stroke PTFE	02-1040-55 (white)	N/A	N/A	02-1085-55 (white)	02-1320-55-85 (white)	08-1375-55 (white)
Full Stroke FDA Wil-Flex™	02-1010-57 (2 orange dots)	N/A	02-1065-57 (2 orange dots)	02-1086-57 (2 orange dots)	N/A	N/A
Full Stroke FDA Viton®	N/A	N/A	N/A	N/A	02-1320-68-85 (white/yellow)	02-1400-68-85 (white/yellow)

\*\* See BOM Chart

▲ Product Contact Components

## WARRANTY

Each and every product manufactured by Wilden Pump and Engineering, LLC is built to meet the highest standards of quality. Every pump is functionally tested to insure integrity of operation.

Wilden Pump and Engineering, LLC warrants that pumps, accessories and parts manufactured or supplied by it to be free from defects in material and workmanship for a period of five (5) years from date of installation or six (6) years from date of manufacture, whichever comes first. Failure due to normal wear, misapplication, or abuse is, of course, excluded from this warranty.

Since the use of Wilden pumps and parts is beyond our control, we cannot guarantee the suitability of any pump or part for a particular application and Wilden Pump and Engineering, LLC shall not be liable for any consequential damage or expense arising from the use or misuse of its products on any application. Responsibility is limited solely to replacement or repair of defective Wilden pumps and parts.

All decisions as to the cause of failure are the sole determination of Wilden Pump and Engineering, LLC.

Prior approval must be obtained from Wilden for return of any items for warranty consideration and must be accompanied by the appropriate MSDS for the product(s) involved. A Return Goods Tag, obtained from an authorized Wilden distributor, must be included with the items which must be shipped freight prepaid.

The foregoing warranty is exclusive and in lieu of all other warranties expressed or implied (whether written or oral) including all implied warranties of merchantability and fitness for any particular purpose. No distributor or other person is authorized to assume any liability or obligation for Wilden Pump and Engineering, LLC other than expressly provided herein.

### PLEASE PRINT OR TYPE AND FAX TO WILDEN

PUMP INFORMATION				
Item # _____		Serial # _____		
Company Where Purchased _____				
YOUR INFORMATION				
Company Name _____				
Industry _____				
Name _____		Title _____		
Street Address _____				
City _____		State _____	Postal Code _____	Country _____
Telephone _____	Fax _____	E-mail _____	Web Address _____	
Number of pumps in facility? _____		Number of Wilden pumps? _____		
Types of pumps in facility (check all that apply): <input type="checkbox"/> Diaphragm <input type="checkbox"/> Centrifugal <input type="checkbox"/> Gear <input type="checkbox"/> Submersible <input type="checkbox"/> Lobe				
<input type="checkbox"/> Other _____				
Media being pumped? _____				
How did you hear of Wilden Pump? <input type="checkbox"/> Trade Journal <input type="checkbox"/> Trade Show <input type="checkbox"/> Internet/E-mail <input type="checkbox"/> Distributor				
<input type="checkbox"/> Other _____				

**ONCE COMPLETE, FAX TO (909) 783-3440**

NOTE: WARRANTY VOID IF PAGE IS NOT FAXED TO WILDEN  
WILDEN PUMP & ENGINEERING, LLC